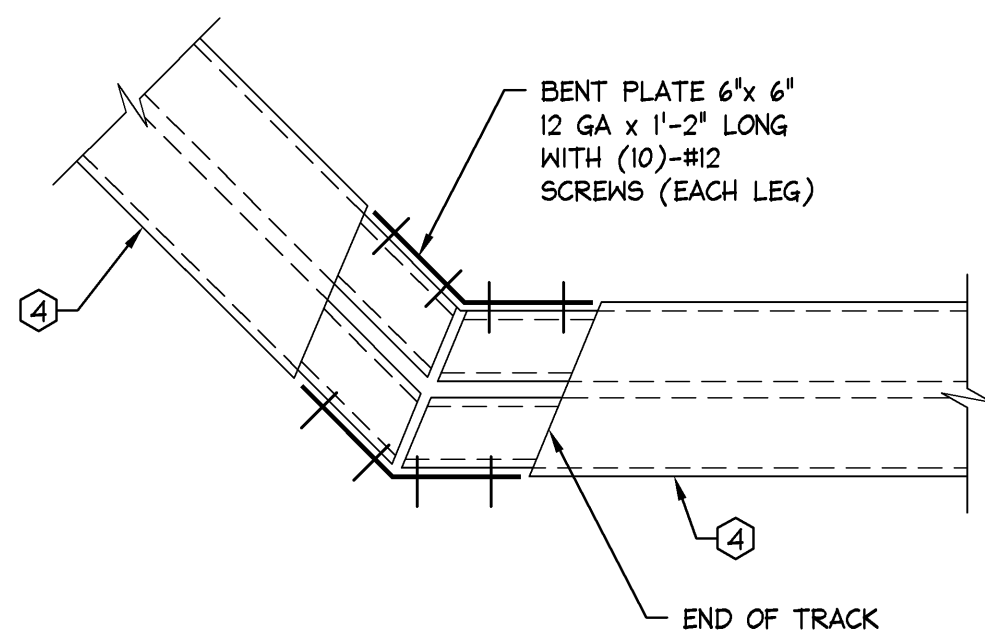


BEAM CONNECTION

N.T.S.

S



BEAM CONNECTION

N.T.S.

R

NOT USED

STOREFRONT SECTION

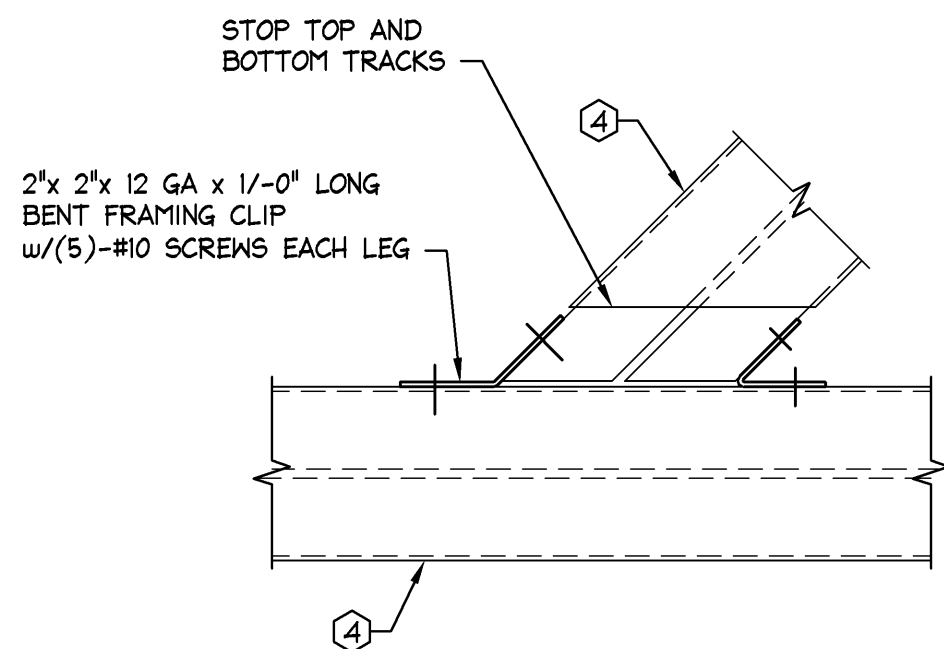
1"=1'-0"

G

STOREFRONT SECTION

1"=1'-0"

C



CONNECTION DETAIL

N.T.S.

P

DETAIL

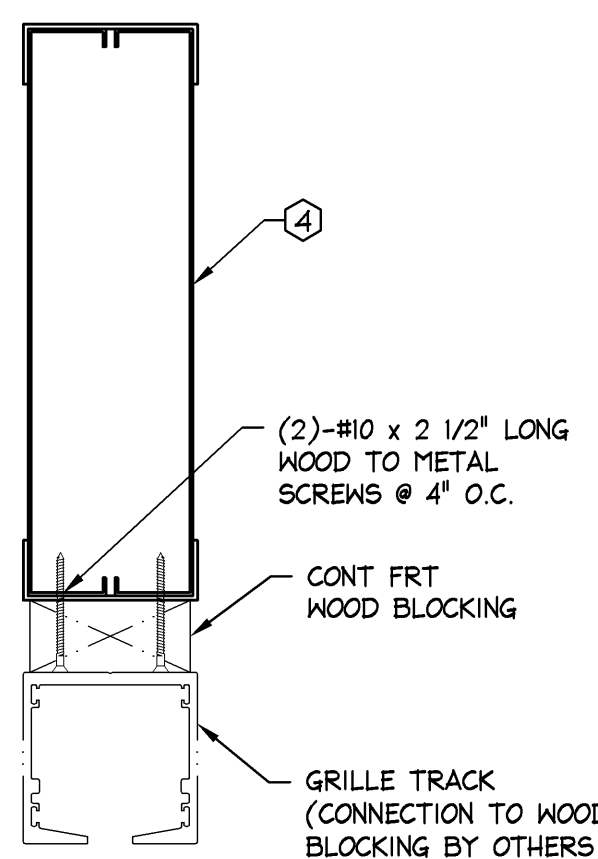
N.T.S.

K

DETAIL

1"=1'-0"

B

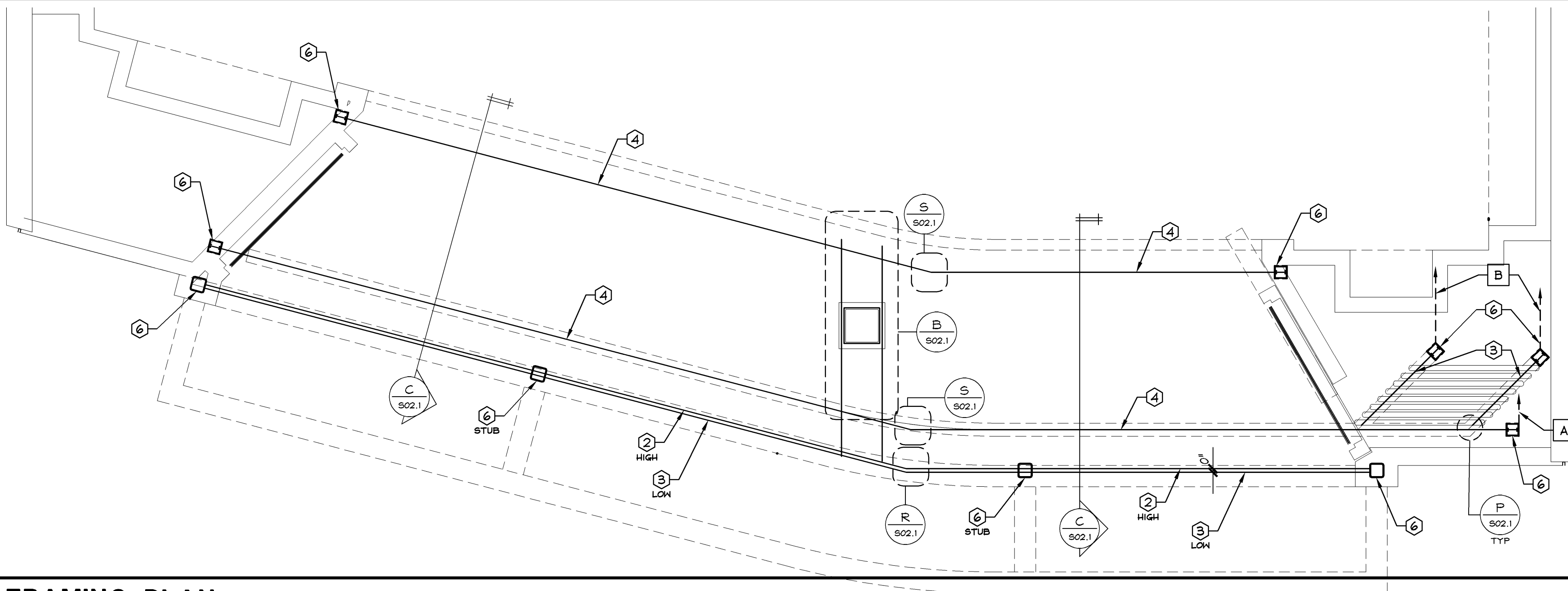


DETAIL

N.T.S.

N

STOREFRONT FRAMING PLAN



ENTIRE SHEET  
REVISED

- A DIAGONAL BRACE PER DETAIL A/S03.1.  
ATTACH TO SIDE OF COLUMN (NEAR  
THE TOP) w/(4)-#10 SCREWS.
- B DIAGONAL BRACE PER DETAIL A/S03.1.  
ATTACH TO TOP OF BEAM WITH  
FRAMING CLIP. SEE K/S02.1.

STOREFRONT WALLS ARE 3 5/8", 20 GA.  
METAL STUD FRAMING @ 16" O.C., UNLESS  
NOTED

NOTE: SEE DRAWING S01.1 FOR CODED NOTES

1/2"=1'-0"

A